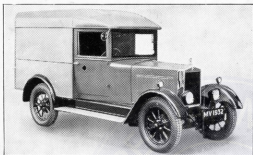


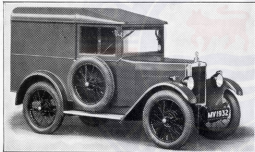
---

# MORRIS LIGHT TRANSPORT

---



*Above—8-10 cwt. Van, £160 ex Works. Below—5-cwt. Van, £110 ex Works.*



**MORRIS**  
**for 1932**  
**provides**  
**still greater**  
**MOBILITY**  
**for**  
**BRITISH**  
**TRADESMEN**

**Work-worthy,**  
**time-saving, money-saving**  
**MORRIS LIGHT VANS**  
**FOR EVERY TRADE . . .**

---

**MORRIS**  
**COWLEY • OXFORD**

---

# MORRIS



# LIG

## The MORRIS 5-CWT. VAN

In Shop Grey

Price (ex Works) .. £110

Triplex safety glass is fitted to windscreen and door-windows, and all external bright parts are chromium finished.



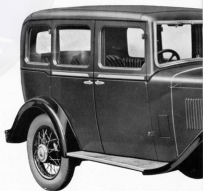
**B**UILT to meet the needs of tradesmen whose businesses require fast and mobile light transport of absolute dependability, the Morris 5-cwt. Van, with its highly developed economical 8 h.p. side-valve engine, generous chassis specification, and extraordinarily good performance, provides both small and large tradesmen with business-expanding transport. The spacious body possesses an interior height of 3 ft. 6 in., a width of 3 ft. 4½ in., and a length behind the driver's seat of 3 ft. 4 in., giving the useful capacity of 38 cubic feet. Finished in shop grey in readiness for the finishing colour of your choice.

**EQUIPMENT.** The equipment includes:—Double sliding windows, single-panel windscreen, speedometer, oil gauge, two-level petrol tap, automatic windscreen wiper, pressure chassis lubricating pump, licence holder, driving mirror, progressive shock absorbers on all wheels, Lucas electric horn, 6-volt lighting, starting and coil ignition set, coil indicator light, combination head and sidelamps, rear lamp, instrument lamp, five detachable wire wheels, five Dunlop cord tyres, spare wheel carrier, jack, tyre pump and full kit of tools.



**W**HEN used for other than business purposes the Morris-Cowley Traveller's Saloon is indistinguishable in appearance and appointment from the standard Morris-Cowley Saloon. It differs, however, inasmuch as the rear panel is provided with an additional (fifth) door which enables the whole of the rear portion of the coachwork to be utilised for the accommodation of light goods or samples, and the rear seat and squab are normally held in position by quick acting clips, which thus renders them instantly removable.

The accommodation of the large rear door and four wide side doors provides quite exceptional loading facilities and renders this car very attractive to those who require a dual-purpose vehicle.



Price (ex Works) .. £195

## EVERY MORRIS VAN CARRIES



# HT



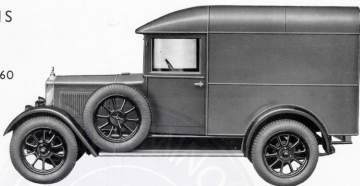
# TRANSPORT

## The MORRIS LIGHT VAN

In Shop Grey

Price (ex Works) .. £160

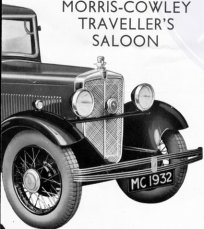
Triplex safety glass is fitted to the windscreen and door-windows, and all external bright parts are chromium finished.



**T**he Morris Light Van, by reason of its absolute reliability, has been instrumental in enabling vast numbers of progressive tradesmen to widen their sphere of operations and thus fully develop their business. It possesses a powerful and highly efficient engine of 14/32 h.p., providing rapid acceleration and excellent hill-climbing even with a full load of 8 cwt. The generous body, 4 ft. 0 in. in width, 4 ft. 9 in. in length, and 4 ft. 3 in. in height, giving a cubic capacity of 78 cubic feet, enables the full load to be comfortably disposed. Finished in shop grey ready to receive the finishing colour most suited to your needs.

**EQUIPMENT.** The equipment includes:—Winding windows in doors, single-panel windscreen, speedometer, clock, oil gauge, petrol gauge (in tank), two-level petrol tap, automatic windscreen wiper, pressure chassis lubrication, licence holder, calometer, driving mirror, progressive shock absorbers, spring gaiters, electric horn, electric lighting and starting, five-lamp equipment, dash lamp, five detachable steel wheels, five Dunlop cord tyres, spare wheel carrier, jack, tyre pump, and full kit of tools.

## The MORRIS-COWLEY TRAVELLER'S SALOON



**COACHWORK.** Brown cellulose with brown Karhyde upholstery, Triplex safety glass windscreen and windows, chromium finish.

**EQUIPMENT.** The equipment includes:—Five-door body, private locks on all doors, four winding windows, roof-lamp, single-panel adjustable windscreen, Lockheed hydraulic brakes, finger-tip control for ignition and dipping headlights, speedometer, clock, oil gauge, electric petrol gauge (on dash), automatic petrol lift, automatic windscreen wiper, pressure chassis lubricating pump, licence holder, calometer and wings, driving mirror, progressive shock absorbers, spring gaiters, double bumpers, electric horn, electric lighting and starting, coil ignition, coil indicator light, five-lamp equipment, instrument panel illumination, Lucas dipping headlights, five detachable Magna type wire wheels, five Dunlop cord tyres, detachable rear seat and squab, spare wheel carrier, tool kit on dash.

## A TWELVE MONTHS' GUARANTEE

## STANDARDISED REPAIR CHARGES

**A** SOMETIMES uncertain item of expense with which the average van owner has had to contend has been that connected with necessary maintenance and repair of his van. This uncertainty has been occasioned by varying labour charges made by different garages throughout the country for carrying out exactly the same work.

In order to afford the Morris owner a clear indication of his commitments in this direction, and in order to keep the upkeep charges of Morris vans at an absolute minimum, Morris Motors Ltd. instituted a scheme of standardised repair and upkeep charges in conjunction with the 1750 authorised Morris Distributors and Dealers throughout the country. This scheme permits the owner-driver to ascertain the precise labour cost of any work he desires to have undertaken before he authorises the work to be carried out, and completely removes the element of uncertainty sometimes associated with repair work.

A complete list of these standardised charges will be found at the end of each Morris Manual (issued with every car sold), or a copy will be sent on request from the Works at Cowley. In addition, any authorised Morris Distributor or Dealer can supply any details required.

This scheme will be one of the greatest of the many benefits derived from the ownership of Morris vans, and as it is honoured by all authorised Morris Distributors and Dealers it is at the disposal of the Morris owner wherever he may be.

## THE MORRIS HIRE-PURCHASE RETAIL PLAN

**M**ORRIS MOTORS LIMITED, in conjunction with United Dominions Trust Limited, offer prospective purchasers of Morris vans an attractive scheme of deferred payment which readily adapts itself to the particular requirements of individual purchasers. Under the Morris Deferred Payment Plan the prospective owner can pay any reasonable deposit, and the instalments can be spread over twelve, eighteen or twenty-four months. Quarterly instalments can also be arranged. We recommend that the deposit be not less than 25 per cent. of the purchase price, although a smaller deposit can be accommodated if the circumstances justify it.

To take a specific example, we will assume that the prospective owner has chosen a model costing £160, and that he can conveniently make a deposit of £65. This leaves a balance outstanding of £95, which he desires to pay in twelve monthly instalments. From the hire-purchase table on this page it will be seen that for a balance of £90 he will have to pay twelve instalments of £7 19s. 9d., and for remaining balance of £5, twelve instalments of 8s. 10½d., giving a total figure inclusive of all interest charges of £8 8s. 7½d. per month over twelve months. Any prospective Morris owner is thus able to work out from the table given the scale of deferred payments covering his own particular case in an exactly similar way. This officially approved deferred payment plan is available at all authorised Morris Distributors and Dealers, and the prospective purchaser can be assured that the usual dictates of commercial etiquette govern all transactions under this scheme and that absolutely no breach of confidence takes place.

**Purchasers desiring to make use of time payment facilities should request that their business be conducted on the official MORRIS HIRE-PURCHASE PLAN.**

Balance after deducting Deposit	12 Instalments of	or 18 Instalments of	or 24 Instalments of
£ s. d.	£ s. d.	£ s. d.	£ s. d.
5 0 0	8 10½	6 1½	4 9
6 0 0	10 7½	7 4½	5 8½
7 0 0	12 5	8 7	6 7½
8 0 0	14 2½	9 9½	7 7½
9 0 0	15 11½	11 0½	8 6½
10 0 0	17 9	12 3	9 6
20 0 0	1 15 6	1 4 6	10 0
30 0 0	2 13 3	1 16 9	1 8 6
40 0 0	3 11 0	2 9 0	1 18 0
50 0 0	4 8 9	3 1 3	2 7 6
60 0 0	5 6 6	3 13 6	2 17 0
70 0 0	6 4 3	4 5 9	3 6 6
80 0 0	7 2 0	4 18 0	3 16 0
90 0 0	7 19 9	5 10 3	4 5 6
100 0 0	8 17 6	6 2 6	4 15 0

The instalments shown include all interest charges.

**MORRIS MOTORS LIMITED, COWLEY, OXFORD**

SIR WILLIAM R. MORRIS, Bt., Chairman.

E. H. BLAKE, Managing Director.